

Specifications

Dimensions (L x W x H)	Glory 2504: 6070 x 5983 x 3655 mm				
	Glory 2504 + Slotter + Stacker: 13025 x 5983 x 3655 mm				
	Glory 2504 + Dryer + Slotter + Stacker: 15075 x 5983 x 3655 mm				
	Glory 2504 + Dryer + Varnish + Slotter + Stacker: 17665 x 5983 x 3655 mm				
Board Size	Maximum: 2000 x 2500 mm (Feeding Direction x Print Width) Minimum: 400 x 600 mm (Feeding Direction x Print Width)				
Slotter	Min. Slot Spacing: 230 x 90 x 230 x 90 mm Max. Slot Depth: 420 mm				
Printing Modes	Resolution	600 x 600	600 x 450	600 x 400	600 x 300
	Linear Speed	100m/min	133m/min	150m/min	180m/min
Substrate/Handling	Type:	Wide range of corrugated boards (kraft liner, white-top liner etc.)			
	Max. Media Width:	2500 mm			
	Thickness:	1-15 mm			
	Handling:	Leading-edge feeder, media positioning, vacuum suction, conveyor belt; all designed for smooth movement and high-quality printing			
Printing	Technology:	Single-Pass, Inkjet			
	Printhead:	Industrial-grade Kyocera printhead			
	Printhead Quantity:	Max. 20 pcs per color, Max. Printing Width 2160 mm			
	Ink Type:	Aqueous Ink			
	Ink Colour:	CMYK			
RIP	Software:	Caldera			
	Input Format:	PDF, EPS, TIFF, JPEG & AI etc.			
		Optimal color solutions for substrates of your choice			
Other Features	Automatic warp detection and warning system Automatic ink consumption calculating function Remote monitor system for instant on-line error detection and resolution Production management system available				
Operating Environment	Temperature:	22°-30°C			
	Humidity:	40~60% RH (non-condensing)			
	Power :	AC3PH 380-400V 50/60Hz			
	Air :	0.6~0.84 MPa			
Total Power	Glory2504:	65 Kw	In Actual Production (Reference Only)	Glory2504:	22 Kw
	Priming Unit:	5 Kw		Priming Unit:	2 Kw
	Drying Unit	110 Kw (Dryer 90kw)		Drying Unit:	14 Kw (IR Dryer Excluded)
	varnishing Unit:	116 Kw (Dryer 90kw)		varnishing Unit:	18 Kw (Dryer Excluded)
	Slotter:	90 Kw		Slotter:	60 Kw
	Handle-Hole Die-Cutting Unit:	18 Kw		Handle-Hole Die-Cutting Unit:	12 Kw
	Stacker:	3 Kw		Stacker:	2 Kw
Weight	Glory2504:	13000 kg (including Temperature & Moisture control room)			
	Priming Unit:	3500 kg			
	Drying Unit:	3200 kg			
	varnishing Unit:	4000 kg			
	Slotter:	8000 kg			
	Handle-Hole Die-Cutting Unit:	3000 kg			
	Stacker:	3200 kg			



Glory 2504

Large Format Single-Pass Corrugated Digital Press

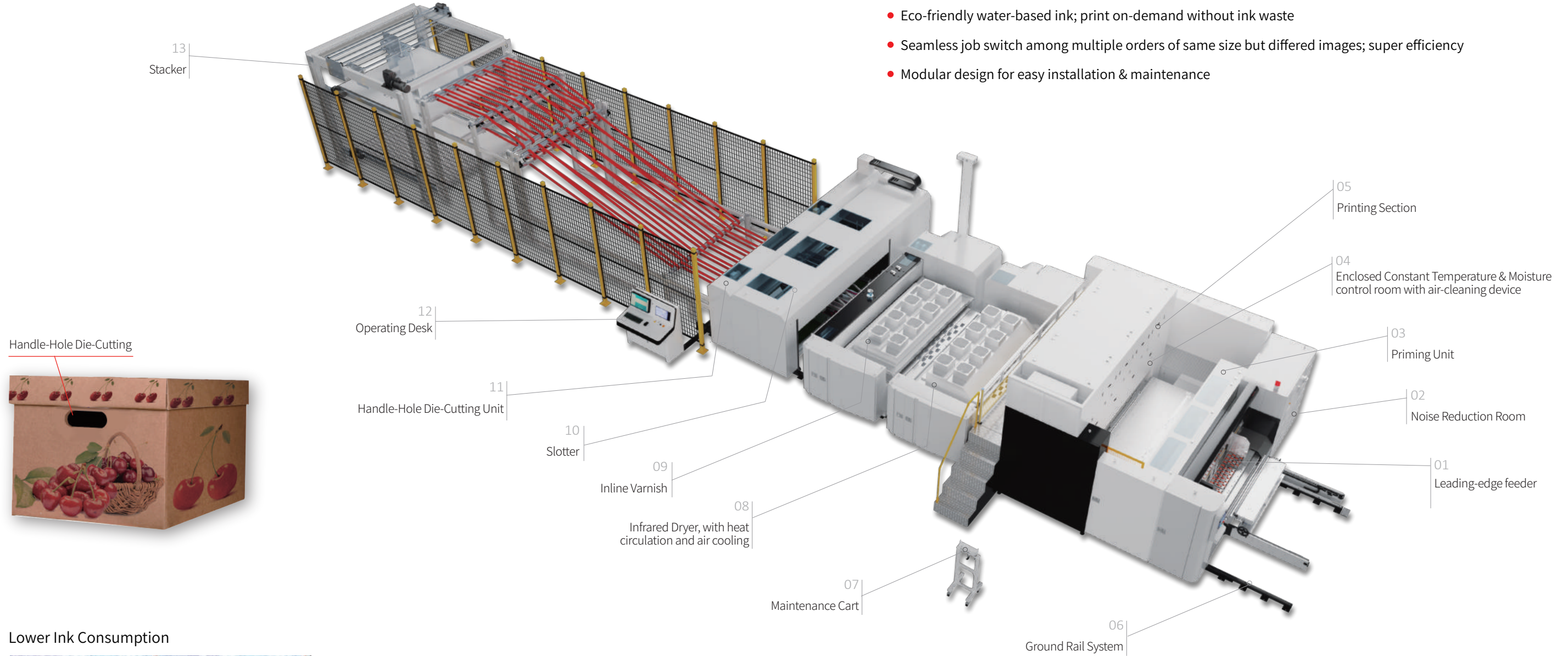


Shenzhen HANWAY Industrial Digital Equipment Co.,Ltd.
 Add: The Third Factory, NO.322 Yuanhu Road, Longgang District Shenzhen China.
 Tel: +86 0755-29375889
 Fax: +86 0755-23217841
 E-mail: info-hanway@hanglorygroup.com
 Http://www.hanway-print.com




Glory 2504

- Industrial large-format design with the maximum print width of 2,160mm and the highest productivity of 17,773m²/hr
- End-to-end workflow integration with Glory2504 printer, slotter and stacker, save time & labor
- No plate-making; no minimum order limitation; instant response to customers' demands; zero inventory
- Eco-friendly water-based ink; print on-demand without ink waste
- Seamless job switch among multiple orders of same size but differed images; super efficiency
- Modular design for easy installation & maintenance



Lower Ink Consumption

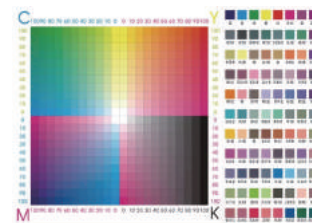


Image Dimension: 2000 x 1345 mm
 Image Pixel: 47248 x 31765
 Resolution: 600 x 600 dpi



Better Graphic Designs

Standard with optional colors



Customized & personalized designs



QR codes & bar codes



Higher Printing Quality



High performance Kyocera printhead in highest resolution of 600dpi, achieves High-End flexo print quality.

Quicker Job Changeover

